

KOMATSU

WA430-6

WA
430

HORSEPOWER

Gross: 173 kW 232 HP / 2100 min⁻¹

Net: 172 kW 231 HP / 2100 min⁻¹

OPERATING WEIGHT

18170 – 19565 kg

BUCKET CAPACITY

3.1 – 4.6 m³



Photos may include optional equipment.

WALK-AROUND





WA430-6

HORSEPOWER	Gross: 173 kW 232 HP / 2100 min ⁻¹
	Net: 172 kW 231 HP / 2100 min ⁻¹

OPERATING WEIGHT	18170 – 19565 kg
-------------------------	------------------

BUCKET CAPACITY	3.1 – 4.6 m ³
------------------------	--------------------------

HIGH PRODUCTIVITY & LOW FUEL CONSUMPTION

- Variable Displacement Piston Pump & Closed-center Load Sensing System (CLSS)
- High Performance Komatsu SAA6D114E-3 Engine
- Low Fuel Consumption
- Dual-mode Engine Power Select System
- Large-capacity Torque Converter
- Automatic Transmission with Mode Select System
- Lock-up Torque Converter (Optional)

INCREASED RELIABILITY

- Komatsu Components
- High-rigidity Frames
- Wet Multiple-disc Brakes and Fully Hydraulic Braking System
- Hydraulic Hoses Use Flat Face O-ring Seals
- Sealed Connectors
- Cation Electrodeposition Primer Paint/ Powder Coating Paint

EASY MAINTENANCE

- Gull-wing Type Engine Side Doors Open Wide
- Equipment Management Monitoring System
- Easy Radiator Cleaning with Reversible Fan
- Automatic Reversible Fan (Optional)

EXCELLENT OPERATOR ENVIRONMENT

- Pillar-less Large Cab
- Low-noise Design
- Electrically Controlled Transmission Lever
- Automatic Transmission with Electronically Controlled Modulation Valve
- Variable Transmission Cut-off System
- Fingertip Control Levers

SAFETY

- ROPS/FOPS Cab (ISO 3471/ISO 3449)
- Rear-hinged Full Open Cab Door

KOMTRAX

- KOMTRAX

HIGH PRODUCTIVITY & LOW FUEL CONSUMPTION

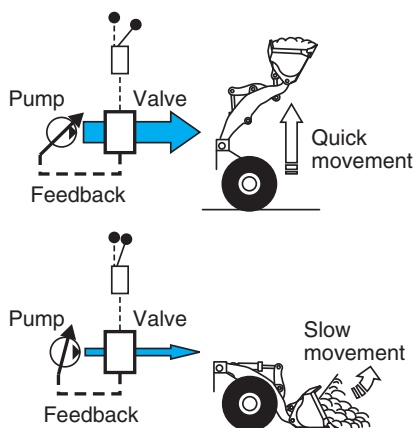


Variable Displacement Piston Pump & Closed-center Load Sensing System (CLSS)

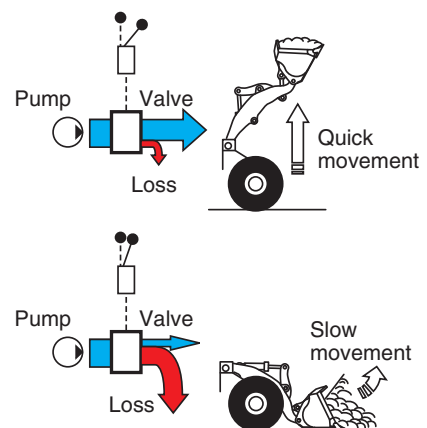
New design variable displacement piston pump combined with the Closed-center load sensing system delivers hydraulic flow just as the job requires preventing wasted hydraulic pressure. Minimized waste loss contributes to better fuel economy.



- **New variable displacement piston pump:**
The pump delivers only necessary amounts minimizing waste loss.



- **Fixed displacement piston pump:**
The pump delivers the maximum amount at any time and the unused flow is disposed.



Faster Travel & Lower Fuel Consumption

- **High performance SAA6D114E-3 engine**

Electronic Heavy Duty Common Rail fuel injection system provides optimum combustion of fuel.

This system also provides fast throttle response to match the machine's powerful tractive effort and fast hydraulic response.

172 kW 231 HP (Net)

- **Low emission engine**

This engine is U.S. EPA Tier 3 and EU Stage 3A emissions certified, without sacrificing power or machine productivity.

- **Low fuel consumption**

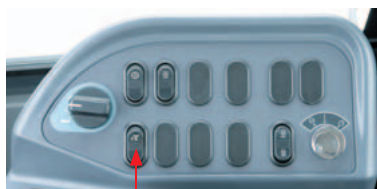
The fuel consumption is reduced greatly because of the low-noise, high-torque engine and the large-capacity torque converter with maximum efficiency in the low-speed range.

- **Dual-mode engine power select system**

This wheel loader offers two selectable operating modes—E and P. The operator can adjust the machine's performance with the selection switch.

- **E Mode:** This mode provides maximum fuel efficiency for general loading.

- **P Mode:** This mode provides maximum power output for hard digging operation or hill climb.



Dual mode engine power selection switch

- **ECO indicator**

The ECO indicator will help an operator to promote energy saving.



ECO indicator

- **Large-capacity torque converter**

Newly designed drive train has a large-capacity torque converter for optimal efficiency. The WA430-6 has plenty of acceleration without the need for full throttle and it can achieve high travel speeds, even on grades or steep ramps leading to feed hoppers. This significantly assists productivity and also delivers great value for load-and-carry operations.

- **Automatic transmission with mode select system**

This operator controlled system allows the operator to select manual shifting or two levels of automatic shifting (low, and high). Auto L mode is for fuel saving operation with the gear shift timing set at lower speeds than Auto H mode.

Therefore Auto L mode keeps the engine in a relatively low rpm range for fuel conservation while yielding adequate tractive force by depressing the accelerator pedal.



Shift mode selection switch

- **Lock-up torque converter (Optional)**

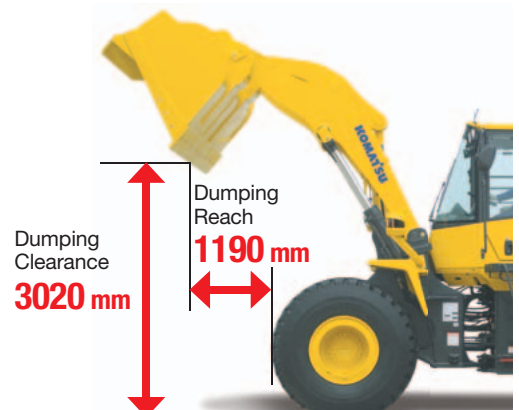
The Komatsu designed lock-up torque converter provides increased production efficiency, reduced cycle times and optimum fuel savings in load & carry or hill-climb operations. The operator can engage the system from 2nd to 4th gear.

This optional feature allows the operator to activate the system on/off with a switch located on the right-side control panel.

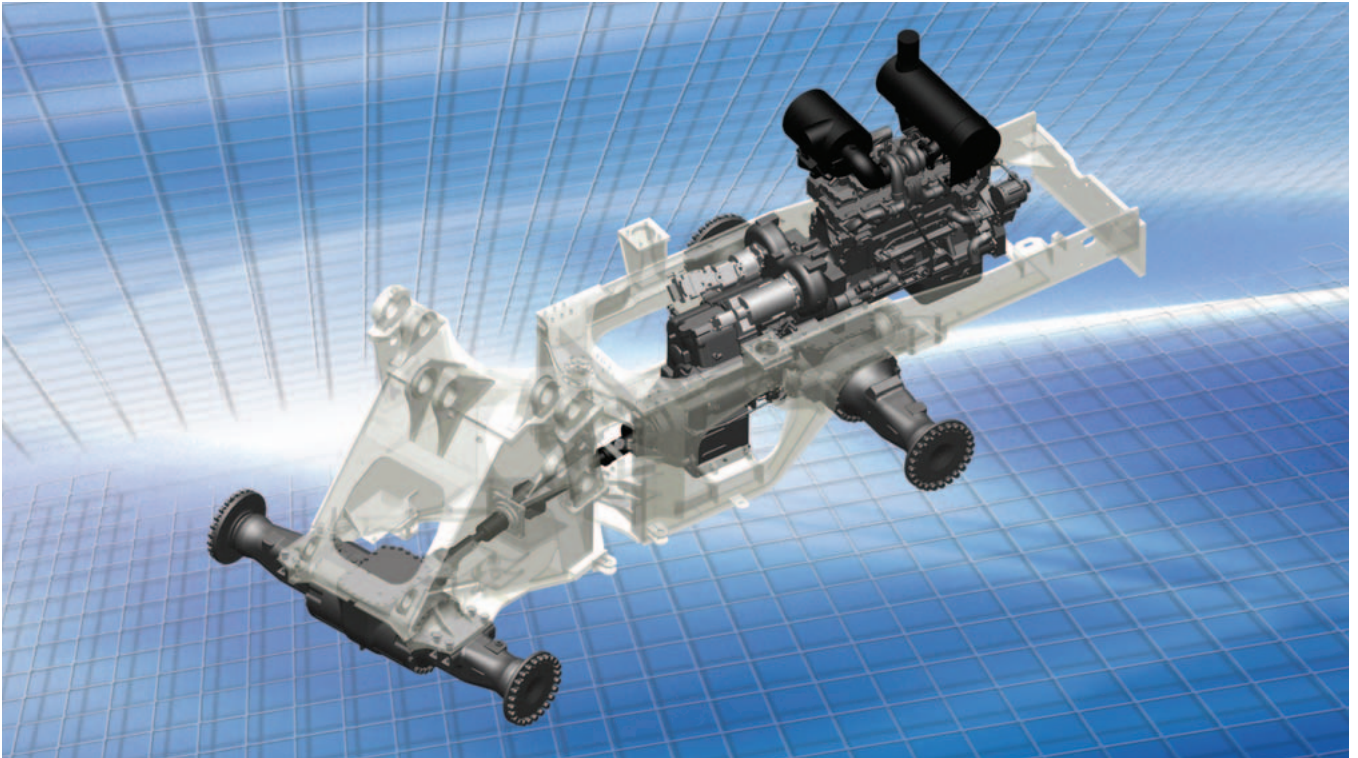
Maximum Dumping Clearance and Reach

The long lift arms provide high dumping clearances and maximum dumping reach. The operator can even level loads on the body of a dump truck easily and efficiently.

(3.5 m³ bucket with Bolt on Cutting Edge, 23.5-25-16PR tires)



INCREASED RELIABILITY



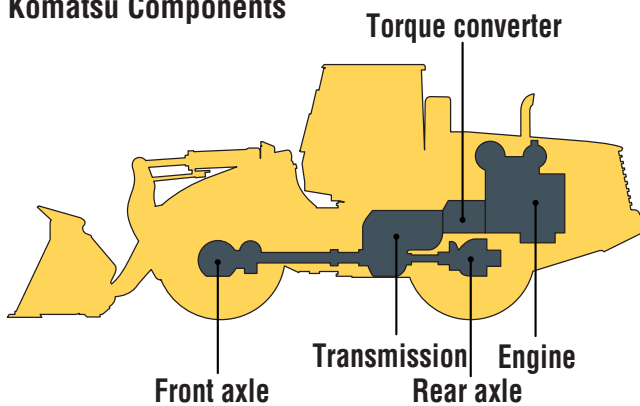
Komatsu Components

Komatsu manufactures the engine, torque converter, transmission, hydraulic units, electric parts, on this wheel loader. Komatsu loaders are manufactured with an integrated production system under a strict quality control system.

High-rigidity Frames and Loader Linkage

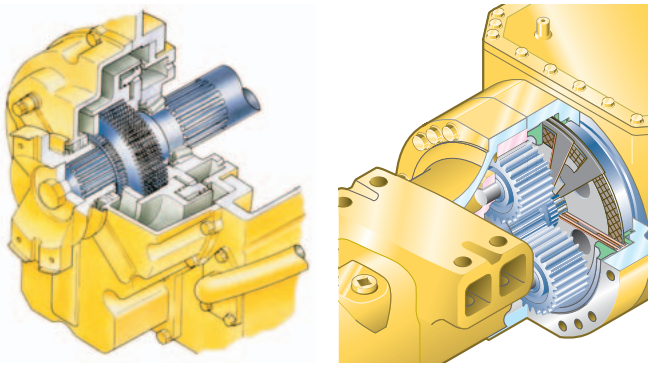
The front and rear frames and the loader linkage have more torsional rigidity to secure resistance against increased stress due to the use of a larger bucket. Frame and loader linkage are designed to accommodate actual working loads, and simulated computer testing proves its strength.

Komatsu Components



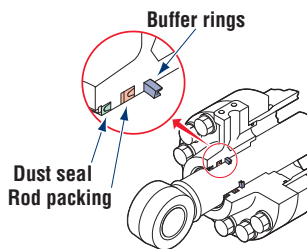
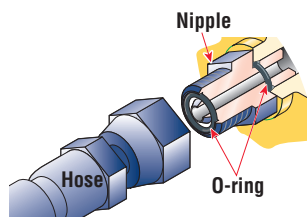
Wet Multiple-disc Brakes and Fully Hydraulic Braking System

This means lower maintenance costs and higher reliability. Wet multiple-disc brakes are fully sealed. Contaminants are kept out, reducing wear and maintenance. Brakes require no adjustments for wear, meaning even lower maintenance. The new parking brake is also an adjustment-free, wet multiple-disc for high reliability and long life. Added reliability is designed into the braking system by the use of two independent hydraulic circuits. Provides hydraulic backup should one of the circuits fail. Fully hydraulic brakes mean no air system to bleed, or the condensation of water in the system that can lead to contamination, corrosion, and freezing.



Reliable Hydraulic Line

- Flat face-to-face o-ring seals**
 Flat face-to-face O-ring seals are used to securely seal hydraulic hose connections and to prevent oil leakage.
- Buffer rings**
 In addition, buffer rings are installed to the head side of the all-hydraulic cylinders to lower the load on the rod seals and maximize the reliability.



Sealed Connectors

Main harnesses and controller connectors are equipped with sealed connectors providing high reliability, water resistance and dust resistance.



Cation Electrodeposition Primer Paint/ Powder Coating Final Paint

Cation electrodeposition paint is applied as a primer paint and powder coating is applied as topcoat to the exterior sheet metal parts. This process results in a beautiful rust-free machine, even in the most severe environments. Some external parts are made of plastic providing long life and high impact resistance.

Bucket Side Guard (Optional)

In addition to the conventional side guard of plate type (for loading products), the bolt-on side guard made of cast steel can be installed optionally. Since it is so designed that the material can flow smoothly on it, it does not increase the digging resistance.



EASY MAINTENANCE



Gull-wing side doors upper stop position

Gull-wing Type Engine Side Doors Open Wide

The operator can open and close each gull-wing type engine side door easily with the assistance of a gas spring to perform daily service checks from the ground.



Gull-wing side doors upper stop position



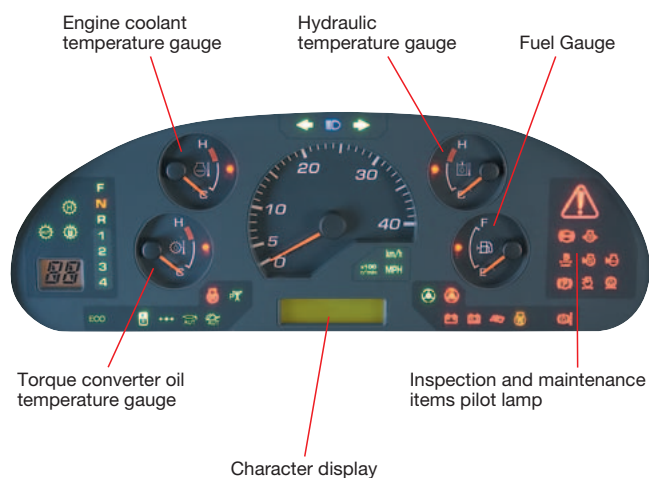
Gull-wing side doors lower stop position

Equipment Management Monitoring System

Monitor is mounted in front of the operator allowing the operator to easily check gauges and warning lights. A specially designed two-spoke steering wheel allows the operator to easily see the instrument panel.

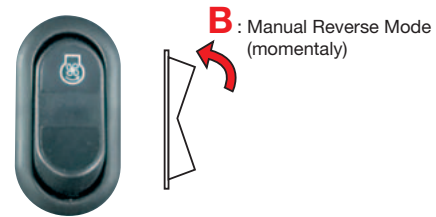
Maintenance Control and Troubleshooting Functions

- **Action code display function.** If the loader has any troubles, the monitor displays action details on the character display at the center bottom of the monitor.
- **Monitor function.** Controller monitors engine oil level, pressure, coolant temperature, air cleaner clogging etc. If controller finds abnormalities, all of these are displayed on LCD.
- **Replacement time notice function.** Monitor informs replacement time of oil and filters on LCD when it reaches replacement intervals.
- **Trouble data memory function.** Monitor stores abnormalities for effective troubleshooting.



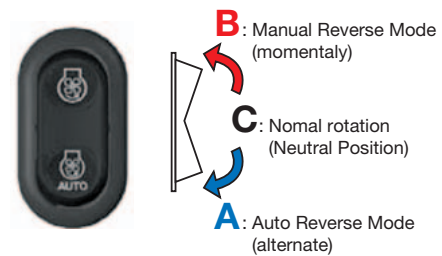
Easy Radiator Cleaning

If the machine is operating in adverse conditions, the operator can reverse the hydraulic cooling fan from inside the cab by pressing a switch on the control panel.



Automatic reversible fan (Optional)

The engine fan is driven hydraulically and can be operated in reverse automatically. When the switch is in the automatic position, the fan revolves in reverse for 2 minutes every 2 hours intermittently (default setting).



EXCELLENT OPERATOR ENVIRONMENT



Pillar-less Large Cab

A wide pillar-less flat glass provides excellent front visibility. The wiper arm covers a large area to provide great visibility even on rainy days. The cab area is the largest in its class providing maximum space for the operator. Increased seat slide adjustment to backward by introducing front mounted air conditioner unit.



Low-noise Design

Noise at operator's ear noise level (ISO 6396:2008): 74 dB(A)
Dynamic noise level (outside) (ISO 6395:2008): 112 dB(A)
The large cab is mounted with Komatsu's unique ROPS/FOPS (ISO 3471/ISO 3449) viscous mounts. The low-noise engine, hydraulically driven fan, and hydraulic pumps are mounted with rubber cushions, and the cab sealing is improved to provide a quiet, low-vibration, dustproof with pressurizing, and comfortable operating environment. Also, exterior noise is lowest in this class.



Telescopic/Tilt Steering Column

The operator can tilt and telescope the steering column to provide a comfortable working position.



- ① Tilt adjustment
- ② Telescopic adjustment

Electrically Controlled Transmission Lever

Easy shifting and directional changes with Komatsu two-lever electronic shifting. Change direction or shift gears with a touch of the fingers without removing the shifting hand from the steering wheel. Solid state electronics and conveniently located direction and gear shift controls make this possible. Automatic shifts in ranges two through four keep production high and manual shifting at a minimum.



- ① Directional lever
- ② Gear shift lever

Automatic Transmission with Electronically Controlled Modulation Valve

Automatic transmission with Electronically Controlled Modulation Valve automatically selects the proper gear speed based on travel speed, engine speed, and other travel conditions. The Electronically Controlled Modulation Valve system engages the clutch smoothly to prevent lags and shocks when shifting. This system provides efficient machine operation and a comfortable ride.

• Kick-down switch

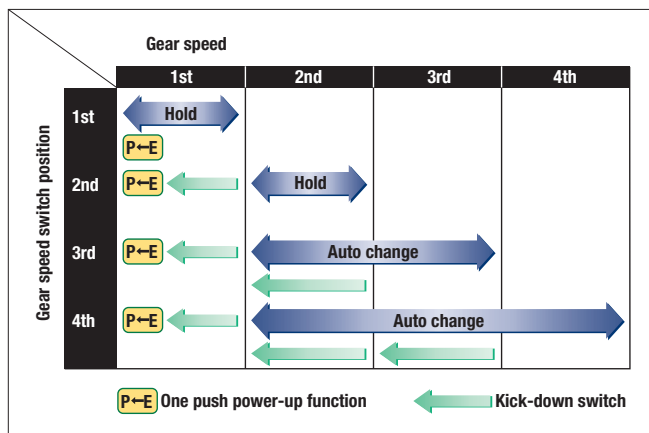
Consider this valuable feature for added productivity. With the touch of a finger, the kick-down switch automatically downshifts from second to first when beginning the digging cycle. It automatically upshifts from first to second when the direction control lever is placed in reverse. This results in increased rim pull for better bucket penetration and reduced cycle times for higher productivity.

• One push power-up function

The kick-down switch also functions as a power-up switch in first gear. The first time the kick-down switch is depressed it functions as a kick-down switch and gear speed is reduced. When the machine is in E operation mode and first gear, pressing the kick-down switch a second time changes the operation mode to P allowing increased power for heavy digging operation. The operation mode returns to E when machine gear speed changes or direction changes to reverse.

• Hold switch

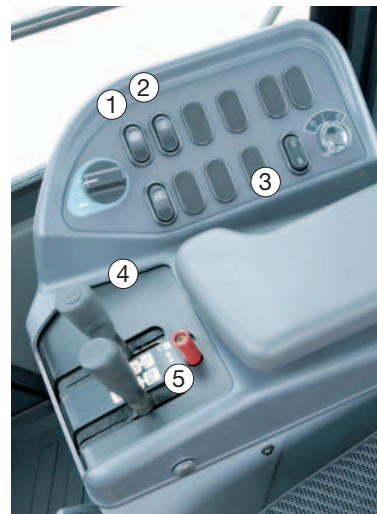
Auto shift is selected and if the operator turns on this switch when the lever is at the 3rd or 4th gear speed position, the transmission is fixed to that gear speed.



Variable Transmission Cut-off System

The operator can continuously adjust the transmission cut-off pressure desired for the left brake pedal using switch located on the right-side control panel. The operator can improve the working performance by setting the cut-off pressure properly depending on working condition.

- High cut-off pressure for digging operations.
- Low cut-off pressure for truck-loading operations.



- 1: Cut-off ON/OFF switch
- 2: Cut-off adjustment switch
- 3: Fan reverse ON/OFF switch
- 4: Boom control
- 5: Bucket control

Fingertip Work Equipment Control Levers with Large Size Arm Rest

New Pressure Proportional Control (PPC) control levers are used for the work equipment. The operator can easily operate the work equipment with fingertip control, reducing operator fatigue and increasing controllability. The PPC control lever column can be slid forward or rearward and the large size arm rest can be adjusted up or down to provide the operator with a variety of comfortable operating positions.





ROPS/FOPS Cab

The ROPS/FOPS Cab is standard for operator's safety. A wide pillar-less flat glass provides excellent front visibility, and a heated rear window provides excellent rear visibility in cold and freezing weather conditions.

ROPS (ISO 3471) : Roll-over Protective Structure

FOPS (ISO 3449) : Falling Objects Protective Structure



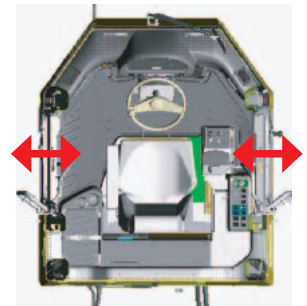
Rear-hinged Full Open Cab Door

The cab door hinges are installed to the rear side of the cab providing a large opening angle for the operator to enter and exit. The steps are designed like a staircase, so that the operator can get on and off the cab easily.



Left or Right Side Cab Entry

The operator can get on and off the machine from either side of the vehicle. This design is convenient when getting on and off in a narrow jobsite or on uneven ground.



Safety Features

- **Secondary steering (Optional)**
If the steering pump is disabled, a secondary steering pump provides hydraulic flow.
- **Two independent lines brake system**
Added reliability is designed into the braking system by the use of two independent hydraulic circuits, providing hydraulic backup should one of the circuits fail.
- **Battery disconnect switch (Optional)**
The battery disconnect switch is located in the right side battery box. This can be used to disconnect power when performing service work on the machine.

KOMTRAX

The Komatsu remote monitoring and management technology provides insightful data about your equipment and fleet in user-friendly format.

Energy Saving Operation Report

KOMTRAX delivers the energy-saving operation report based on the operating information such as fuel consumption, load summary and idling time, which helps you efficiently run a business.



This report image is an example of hydraulic excavator

Equipment Management Support

Through the web application, a variety of search parameters are available to quickly find information about specific machines based on key factors. Moreover, KOMTRAX finds out machines with problems from your fleet and shows you through an optimal interface.



Location

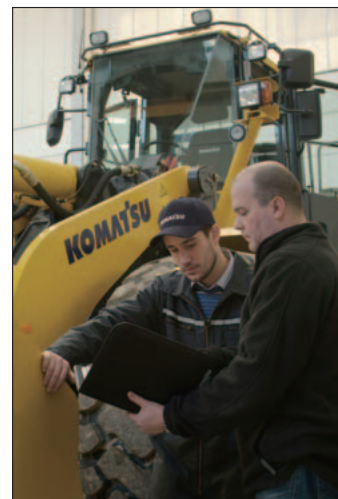
Working status

Periodic maintenance

The report contents and data depend on the machine model.

Optimal Strategy for Efficient Work

The detailed information that KOMTRAX puts at your fingertips helps you manage your fleet conveniently on the web anytime, anywhere. It gives you the power to make better daily and long-term strategic decisions.



SPECIFICATIONS



ENGINE

ModelKomatsu SAA6D114E-3
 Type.Water-cooled, 4-cycle
 AspirationTurbocharged, aftercooled
 Number of cylinders6
 Bore x stroke.114 mm x 135 mm
 Piston displacement8.27 L
 GovernorAll-speed, electronic
 Horsepower
 SAE J1995Gross 173 kW 232 HP
 ISO 9249/SAE J1349*Net 172 kW 231 HP
 Rated rpm.2100 min⁻¹
 Fan drive method for radiator coolingHydraulic
 Fuel system.Direct injection
 Lubrication system:
 MethodGear pump, force-lubrication
 FilterFull-flow type
 Air cleanerDry type with double elements and
 dust evacuator, plus dust indicator
 *Net horsepower at the maximum speed of radiator cooling fan is 163 kW.
 U.S. EPA Tier 3 and EU Stage 3A emissions certified.



TRANSMISSION

Torque converter:
 Type3-element, 1-stage, 1-phase
 Transmission:
 TypeFull-powershift, countershaft type
 Travel speed: km/h
 Measured with 23.5-25 tires

	1st	2nd	3rd	4th
Forward	7.0	12.3	21.6	37.2
Reverse	7.6	12.9	23.0	37.2

Measured with 26.5-25 tires

	1st	2nd	3rd	4th
Forward	7.4	12.9	23.0	38.0
Reverse	7.9	13.7	24.5	38.0



AXLES AND FINAL DRIVES

Drive systemFour-wheel drive
 FrontFixed, semi-floating
 RearCenter-pin support, semi-floating,
 18° total oscillation
 Reduction gearSpiral bevel gear
 Differential gear.Conventional type
 Final reduction gearPlanetary gear, single reduction



BRAKES

Service brakes.Hydraulically actuated,
 wet multiple-disc brakes actuate on four wheels
 Parking brakeWet multiple-disc brake
 Secondary brake.Parking brake is commonly used



STEERING SYSTEM

Type.Articulated type, full-hydraulic power steering
 Steering angle35° each direction (40° end stop)
 Minimum turning radius at
 the center of outside tire6335 mm



HYDRAULIC SYSTEM

Steering system:
 Hydraulic pumpPiston pump
 Capacity137 L/min at rated rpm
 Relief valve setting24.5 MPa 250 kgf/cm²
 Hydraulic cylinders:
 TypeDouble-acting, piston type
 Number of cylinders.2
 Bore x stroke75 mm x 442 mm
 Loader control:
 Hydraulic pumpPiston pump
 Capacity205 L/min at rated rpm
 Relief valve setting31.4 MPa 320 kgf/cm²
 Hydraulic cylinders:
 TypeDouble-acting, piston type
 Number of cylinders—bore x stroke:
 Lift cylinder2- 130 mm x 776 mm
 Bucket cylinder1- 160 mm x 535 mm
 Control valve.2-spool type
 Control positions:
 BoomRaise, hold, lower, and float
 BucketTilt-back, hold, and dump
 Hydraulic cycle time (rated load in bucket)
 Raise.6.1 s
 Dump2.0 s
 Lower (Empty)3.3 s



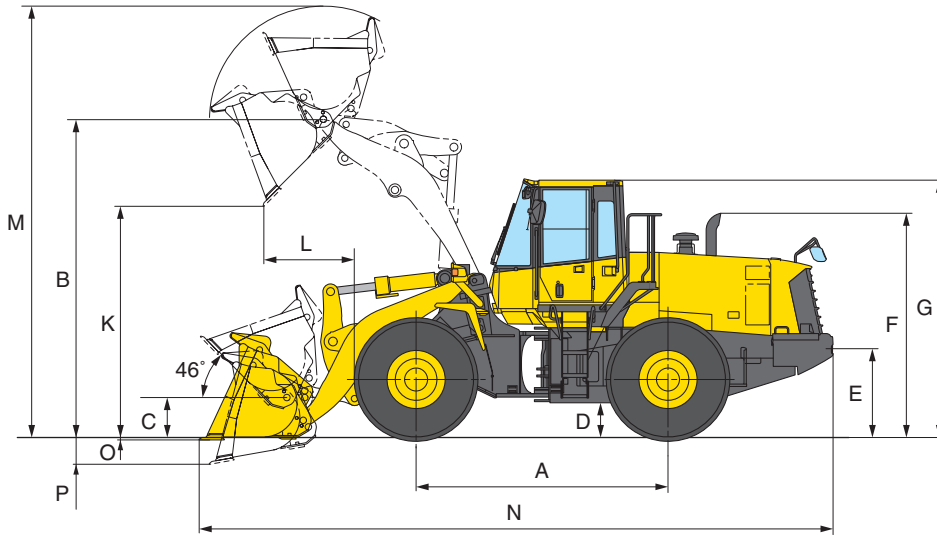
SERVICE REFILL CAPACITIES

Cooling system32 L
 Fuel tank (Specified capacity).325 L
 Engine30 L
 Hydraulic system.139 L
 Axle front.49 L
 rear40 L
 Torque converter and transmission54 L

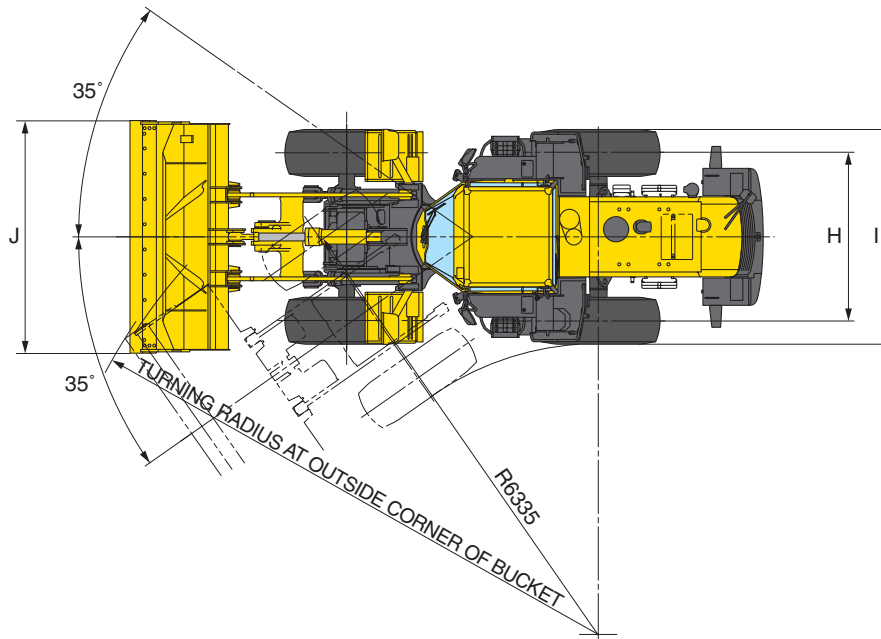


DIMENSIONS

Measured with 23.5-25-16PR (L3) tires



		Standard Boom	High Lift Boom
H	Tread	2200 mm	
I	Width over tires	2820 mm	
A	Wheelbase	3300 mm	
B	Hinge pin height, max. height	4165 mm	4655 mm
C	Hinge pin height, carry position	520 mm	700 mm
D	Ground clearance	455 mm	
E	Hitch height	1150 mm	
F	Overall height, top of the stack	2940 mm	
G	Overall height, ROPS cab	3390 mm	





DIMENSIONS

Measured with 23.5-25-16PR (L-3) tires

Standard Boom		Stockpile Bucket			Excavating Bucket			Loose Material Bucket	Light Material Bucket	
		Bolt on Cutting edges	Teeth and Segments	Teeth	Bolt on Cutting edges	Teeth and Segments	Teeth	Bolt on Cutting edges	Bolt on Cutting edges	
Bucket capacity:	heaped ISO rated	3.5 m ³	3.5 m ³	3.3 m ³	3.3 m ³	3.3 m ³	3.1 m ³	3.8 m ³	4.6 m ³	
	heaped 110% Fill factor	3.9 m ³	3.9 m ³	3.6 m ³	3.6 m ³	3.6 m ³	3.4 m ³	4.2 m ³	5.1 m ³	
	struck	3.0 m ³	3.0 m ³	2.8 m ³	2.8 m ³	2.8 m ³	2.6 m ³	3.2 m ³	4.0 m ³	
J	Bucket width	3050 mm	3065 mm	3065 mm	3050 mm	3065 mm	3065 mm	3050 mm	3050 mm	
	Bucket weight	1735 kg	1795 kg	1665 kg	1810 kg	1870 kg	1740 kg	1820 kg	1990 kg	
K	Dumping clearance, max. height and 45° dump angle*	3020 mm	2895 mm	2895 mm	3090 mm	2970 mm	2970 mm	2975 mm	2870 mm	
L	Reach at max. height and 45° dump angle*	1190 mm	1290 mm	1290 mm	1120 mm	1215 mm	1215 mm	1235 mm	1340 mm	
	Reach at 2130 mm dumping clearance and 45° dump angle	1835 mm	1870 mm	1870 mm	1795 mm	1835 mm	1835 mm	1855 mm	1910 mm	
	Reach with arm horizontal and bucket level	2685 mm	2840 mm	2840 mm	2580 mm	2735 mm	2735 mm	2745 mm	2895 mm	
M	Operating height (fully raised)	5645 mm	5645 mm	5645 mm	5590 mm	5590 mm	5590 mm	5695 mm	5945 mm	
N	Overall length	8305 mm	8460 mm	8460 mm	8200 mm	8355 mm	8355 mm	8365 mm	8515 mm	
	Loader clearance circle (35° diameter (bucket at carry, outside corner of bucket))	14670 mm	14760 mm	14760 mm	14590 mm	14700 mm	14700 mm	14680 mm	14760 mm	
O	Digging depth:	0°	120 mm	135 mm	135 mm	120 mm	135 mm	135 mm	120 mm	120 mm
		10°	350 mm	395 mm	395 mm	330 mm	375 mm	375 mm	360 mm	385 mm
P	Static tipping load:	straight	13925 kg	13850 kg	14270 kg	13895 kg	13820 kg	14095 kg	13820 kg	13610 kg
		40° full turn	12060 kg	11985 kg	12370 kg	12025 kg	11950 kg	12210 kg	11955 kg	11755 kg
	Breakout force	180 kN	182 kN	195 kN	196 kN	198 kN	213 kN	173 kN	155 kN	
	Operating weight	18240 kg	18300 kg	18170 kg	18315 kg	18375 kg	18245 kg	18325 kg	18495 kg	

High Lift Boom		Excavating Bucket		
		Bolt on Cutting edges	Teeth and Segments	Teeth
Bucket capacity:	heaped ISO rated	3.3 m ³	3.3 m ³	3.1 m ³
	heaped 110% Fill factor	3.6 m ³	3.6 m ³	3.4 m ³
	struck	2.8 m ³	2.8 m ³	2.6 m ³
J	Bucket width	3050 mm	3065 mm	3065 mm
	Bucket weight	1810 kg	1870 kg	1740 kg
K	Dumping clearance, max. height and 45° dump angle*	3585 mm	3460 mm	3460 mm
L	Reach at max. height and 45° dump angle*	1225 mm	1325 mm	1325 mm
	Reach at 2130 mm dumping clearance and 45° dump angle	2265 mm	2315 mm	2315 mm
	Reach with arm horizontal and bucket level	3015 mm	3175 mm	3175 mm
M	Operating height (fully raised)	6080 mm	6080 mm	6080 mm
N	Overall length	8940 mm	9095 mm	9095 mm
	Loader clearance circle (35° diameter (bucket at carry, outside corner of bucket))	15030 mm	15140 mm	15140 mm
O	Digging depth:	0°	160 mm	180 mm
		10°	375 mm	420 mm
P	Static tipping load:	straight	12380 kg	12305 kg
		40° full turn	10625 kg	10530 kg
	Breakout force	187 kN	189 kN	204 kN
	Operating weight	19505 kg	19565 kg	19435 kg

* At the end of tooth or bolt on cutting edge (B.O.C.).

All dimensions, weights, and performance values based on ISO 7131 and 7546 standards.

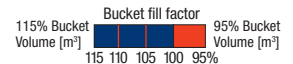
Static tipping load and operating weight shown include lubricant, coolant, full fuel tank, ROPS cab, and operator. Machine stability and operating weight affected by counterweight, tire size, and other attachments.

Apply the following weight changes to operating weight and static tipping load.



BUCKET SELECTION GUIDE

The size and type of the bucket should be properly selected depending on the density of the material and the expected bucket fill factor. Depending on the conditions, Komatsu buckets may perform more than rated capacity thanks to powerful boom linkage, efficient bucket shape and high rim-pull.



Expected density and maximum possible fill factor for each material

Material	Potential Fill factor [%]	Material density : kg/m ³				
		1000	1200	1400	1600	1800
Earth/Clay	Up to 115				●	●
Sand /Gravel	Up to 115					●
Aggregate	Up to 110				●	
Rock	Up to 100				●	●

Standard Boom

Type of Bucket	Rated Bucket Volume	Material density : kg/m ³				
		1000	1200	1400	1600	1800
Light Material with B.O.C.	4.6 m ³	5.3 m ³			4.4 m ³	
Loose Material with B.O.C.	3.8 m ³		4.4		3.6	
Stockpile with B.O.C. / Teeth & Segments	3.5 m ³			4.0		3.3
Stockpile with Teeth	3.3 m ³				3.8	3.1
Excavating with B.O.C. / Teeth & Segments	3.3 m ³			3.8		3.1
Excavating with Teeth	3.1 m ³				3.6	2.9

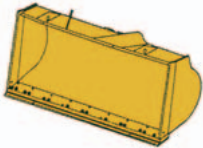
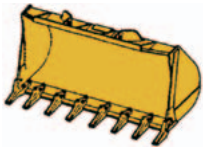
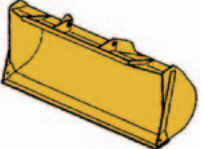
High Lift Boom

Excavating with B.O.C. / Teeth & Segments	3.3 m ³			3.8		3.1
Excavating with Teeth	3.1 m ³				3.6	2.9

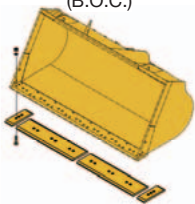
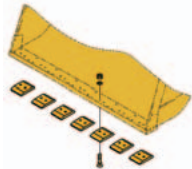
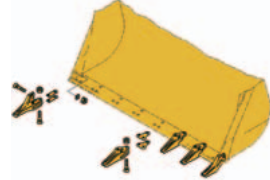
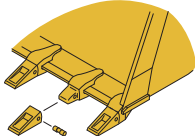
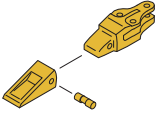


BUCKETS & ATTACHMENTS


■ **Buckets**

Type	Feature	Image
Stockpile Bucket	This bucket is used for loading stockpile products, such as crushed rock and construction materials.	
Excavating Bucket	This bucket is used for excavating and loading blasted rock on rock crushing job sites, or for excavating natural ground. It has a flat-blade, straight cutting edge, and provides superior rigidity and wear resistance.	
Loose/Light Material Bucket	This bucket is used for loading materials with comparatively light specific gravity. It is based on the general purpose bucket, with a lengthened cutting edge and width to give increased capacity.	

■ **Cutting Edges and Teeth**

Type	Feature	Image	
Cutting Edge Segment Edge	This edge is made for use in loading loose sand and soil, or for loading stockpiled materials. It is bolted to the leading edge of general purpose buckets and may be detached and reversed. The cutting edges are manufactured from especially heat treated, high tension steel, and since they are reversible, both edges can be used. This effectively doubles their working life.		
Teeth (Bolt on type)	These teeth are suitable for loading or excavation of piles of earth or sand, blasted rock, and jobs in the field that involve digging into the side of slopes. The special heat treated, tensile strength steel alloy used in their production assures that they will wear and have a long service life.		
Teeth (Tip type)	These teeth tips which are attached to an adapter that is welded or bolted to the bucket edge. This means that an interchangeable part, the tooth tip, absorbs most of the wear and protects the actual bucket edge. They give excellent performance when used to handle blasted rock, piles of earth and similarly heavy duty tasks.		

■ **Grapples**

Type	Feature	Image
Log Grapple	This is a special log attachment for use with logs ranging from small-diameter short logs to large-diameter long logs. Its shape enables it to grip the log well with little rolling shock, and it is designed so that the center of gravity of the log is close to the machine body. This enables the machine to maintain its stability when loading and hauling.	



WEIGHT / DIMENSIONS

Tires or attachments	Operating weight	Tipping load straight	Tipping load full turn	Width over tires	Ground clearance	Change in vertical dimensions
	kg	kg	kg	mm	mm	mm
23.5-25-16PR (L-3)	0	0	0	2820	455	0
23.5R25 (L-3)	+50	+40	+35	2820	455	0
26.5-25-16PR (L-3)	+310	+235	+205	2940	520	+65
26.5R25 (L-3)	+490	+370	+330	2940	520	+65
Install additional counterweight	+325	+820	+680			



STANDARD EQUIPMENT

ENGINE/POWER TRAIN

- Air cleaner with dust indicator
- Engine, Komatsu SAA6D114E-3 diesel
- Parking brake, electric
- Service brakes, wet disc type
- Transmission, 4 forward and 4 reverse

ELECTRICAL SYSTEM

- Alternator, 24 V/60 A
- Back-up alarm
- Back-up lights
- Batteries, 2 x 12 V/136 Ah
- Directional signal
- Engine shut-off system, electric
- Front work lamps, LH and RH side
- Hazard lamps
- Rear work lamps, LH and RH side
- Starting motor, 24 V/7.5 kW
- Stop and tail lamps, and turn signal lamps

HYDRAULIC SYSTEM

- 2-spool valve for boom and bucket controls
- Hydraulic-driven fan with reverse rotation
- Lift cylinders and bucket cylinder

CAB

- Air conditioner
- Ashtray
- Automatic shift transmission with mode select system
- Cigarette lighter
- Cup holder
- Electronically controlled transmission lever
- Floor mat
- Front wiper (with washer and intermittent)
- Horn, electric
- Main monitor panel with Equipment Management Monitoring System
- Pillar cover
- PPC fingertip control, 2 levers
- Rear view mirror for cab
- Rear window washer and wiper
- ROPS/FOPS (ISO 3471/ISO 3449) cab
- Seat belt
- Seat, air suspension type with reclining
- Steering wheel, tiltable, telescopic
- Sun visor

WORK EQUIPMENT

- Boom kick-out
- Bucket positioner
- Counterweight, standard
- Loader linkage with standard boom

OTHER EQUIPMENT

- Front fenders
- Fuel pre-filter with water separator
- Handrails for platform
- Hard water area arrangement
- Hydraulic oil filter
- Radiator
- Radiator mask, lattice type
- Rear under view mirror
- Tires and rims



OPTIONAL EQUIPMENT

ENGINE/POWER TRAIN

- Brake cooling system
- Engine pre-cleaner
- Engine pre-cleaner, oil bath type
- Limited slip differential (F&R)
- Lock-up clutch torque converter
- Secondary steering (ISO 5010)

ELECTRICAL SYSTEM

- Alternator, 24 V/90 A
- Batteries, large capacity, 2 x 12 V/140 Ah
- Batteries, Maintenance free, 2 x 12 V/136 Ah
- Battery disconnect switch
- Beacon guard
- Rotating light
- Starting motor, 24V/ 11kW

HYDRAULIC SYSTEM

- 3-spool valve with lever and piping
- Bucket cylinder for fork attachment
- Bucket cylinder for high lift
- Hydraulic-driven fan with automatic reverse rotation

CAB

- AM/FM radio
- Auto air conditioner
- Cab heater and defroster
- DC12V electrical outlets
- FNR selector switch
- Joystick steering
- Load meter
- Multifunction mono-lever
- PPC hydraulic control, mono lever
- Rear view monitoring system
- Seat, deluxe suspension seat

WORK EQUIPMENT

- Additional counterweight (340 kg)
- Bucket teeth (bolt on type)
- Bucket teeth (tip type)
- Counterweight for log
- Cutting edge (bolt on type)
- Guard, side edge
- High lift boom
- Log grapple
- Segmented edges
- Various bucket options

OTHER EQUIPMENT

- Auto greasing system
- Compliant Bio diesel fuel
- Cool & heat box
- Electronically Controlled Suspension System
- Extra poor fuel pre-filter
- Fire extinguisher
- Fire proof net
- Filler cap lock & cover lock
- Ordinary spare parts
- Power train guard
- Rear full fenders
- Spec for cold area
- Spec for sandy area
- Tool box
- Tool kit
- Various tire options, radial and bias
- Wheel stopper
- Wide fenders

KOMATSU TOTAL SUPPORT



Komatsu Total Support

To keep your machine available and minimize operation cost when you need it, Komatsu Distributor is ready to provide a variety of supports before and after procuring the machine.

Fleet recommendation

Komatsu Distributor can study the customer's job site and provide the most optimum fleet recommendation with detailed information to meet all of your application needs when you are considering to buy new machines or replace the existing ones from Komatsu.

Product support

Komatsu Distributor gives the proactive support and secures the quality of the machinery that will be delivered.

Parts availability

Komatsu Distributor is available for emergency inquiry by the customers for genuine, quality guaranteed Komatsu parts.

Technical support

Komatsu product support service (Technical support) is designed to help customer. Komatsu Distributor offers a variety of effective services to show how much Komatsu is dedicated to the maintenance and support of Komatsu machine.

- Preventive Maintenance (PM) clinic
- Oil & Wear analysis program

Repair & maintenance service

Komatsu Distributor offers quality repair and maintenance service to the customer, utilizing and promoting Komatsu developed programs.

Komatsu Reman (Remanufactured) components

Komatsu Reman products are the result of the implementation of the Komatsu global policy which establishes and agrees to reduce the owning, operating and total Life Cycle Costs (LCC) to Komatsu's customer through high quality, prompt delivery and competitively priced in own remanufactured products (QDC).



Up to 20% blended biodiesel fuel and paraffine fuel can be used. Please consult your Komatsu distributor for detail.

<https://www.komatsu.jp/en/>

Printed in Japan 202109 IP.SIN

The image shows the Komatsu logo, which consists of the word "KOMATSU" in a bold, blue, sans-serif font. The letters are all uppercase and have a consistent thickness. The logo is positioned in the top-left corner of a rectangular box that occupies the lower half of the page.